

兔抗 EIF4E 多克隆抗体

中文名称：兔抗 EIF4E 多克隆抗体

英文名称：Anti-EIF4E (Ab-209) rabbit polyclonal antibody

别名：CBP; EIF4F; AUTS19; EIF4E1; EIF4EL1

相关类别：一抗

储存：冷冻（-20℃）避光

宿主：Rabbit

抗原：EIF4E

反应种属：Human, Mouse, Rat

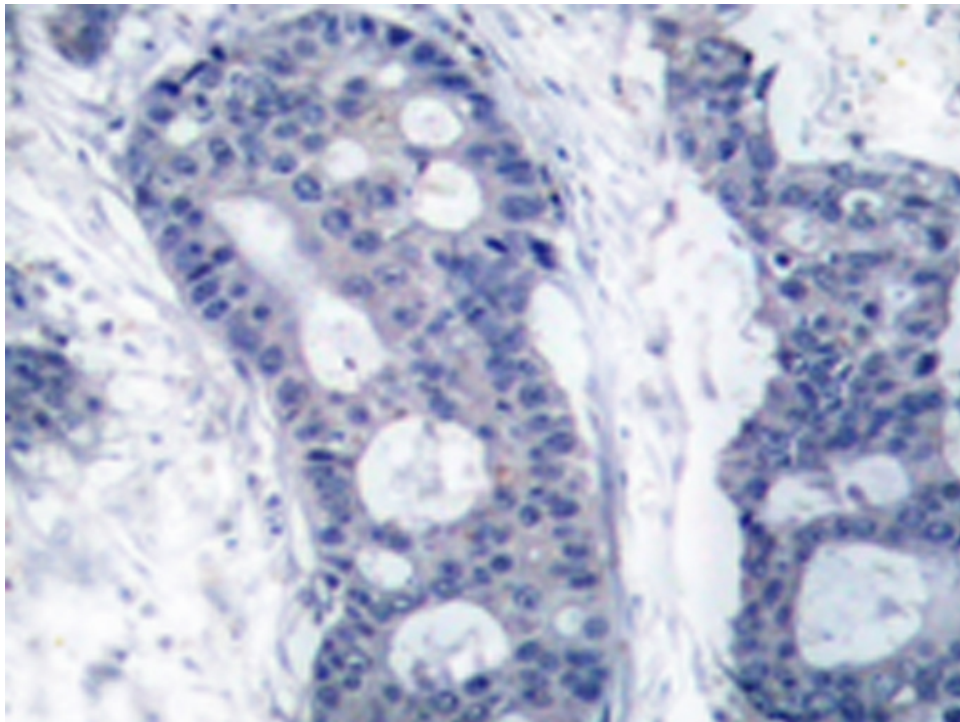
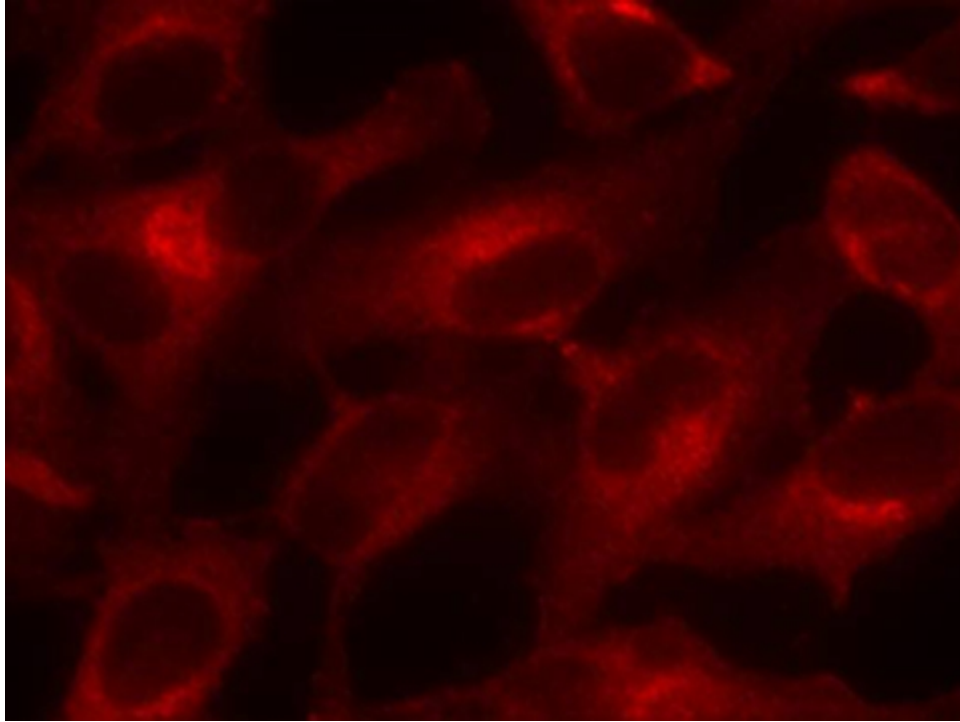
标记物：Unconjugate

克隆类型：rabbit polyclonal

技术规格

| | |
|--------------------------------|--|
| Background: | Recognizes and binds the 7-methylguanosine-containing mRNA cap during an early step in the initiation of protein synthesis and facilitates ribosome binding by inducing the unwinding of the mRNAs secondary structures. |
| Applications: | WB, IHC, IF |
| Name of antibody: | EIF4E |
| Immunogen: | Synthetic peptide of human EIF4E (Ab-209) |
| Full name: | eukaryotic translation initiation factor 4E |
| Synonyms : | CBP; EIF4F; AUTS19; EIF4E1; EIF4EL1 |
| SwissProt: | P06730 |
| IHC positive control: | Human breast carcinoma |
| IHC Recommend dilution: | 50-100 |

| | |
|---------------------------------|---------------------------|
| WB Predicted band size: | 25 kDa |
| WB Positive control: | Hela, HepG2 and 293 cells |
| WB Recommended dilution: | 500-1000 |
| IF Positive control: | Hela cells |
| IF Recommended dilution | 100-200 |



KD

34



25



20

